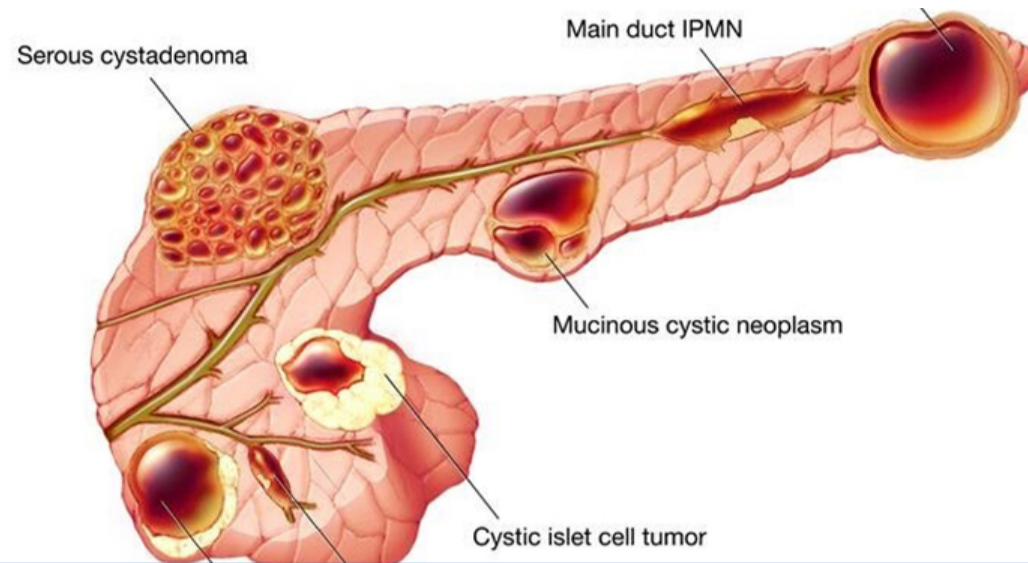


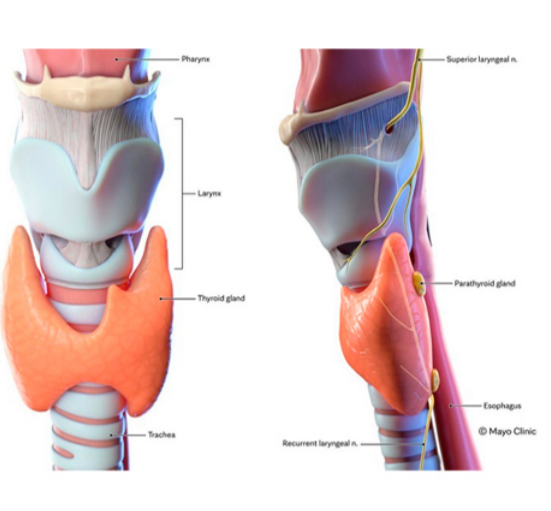
Cancer Physician Update

January 2025



READ [Advancements in pancreatic cancer screening](#)

Patient Care



First larynx transplant for Mayo Clinic in Arizona

Six surgeons and 20 support staff members completed the first larynx transplant at Mayo Clinic in an extraordinary 21-hour operation.

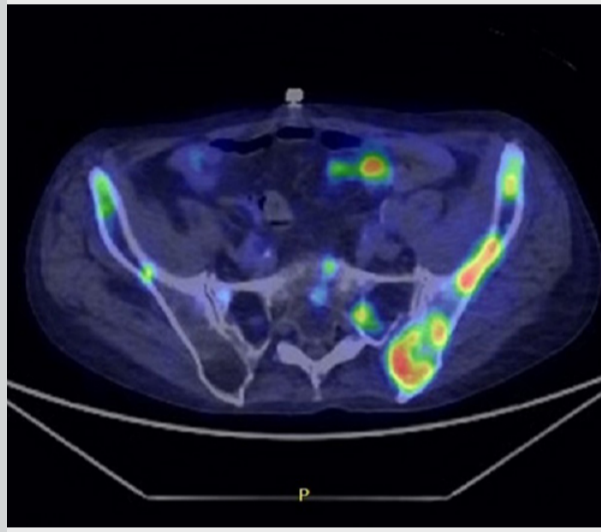
[Learn more](#)

[Refer a Patient](#)

[See more Cancer news](#)

[View Cancer specialty videos and Grand Rounds presentations](#)

Research



Developing cutting-edge liquid biopsy technology to improve survival for patients with lethal prostate cancer

Mayo Clinic researchers discovered a new blood analysis biomarker that could help predict outcomes and personalize treatment for patients with lethal prostate cancer.

[Learn more](#)

[See all Cancer Clinical Trials at Mayo Clinic](#)

Education

Mayo Clinic School of Continuous Professional Development offers live courses, livestreaming courses, online continuing medical education (CME) courses and podcasts to meet your CME needs.

[See all Hematology and Oncology Continuing Medical Education courses](#)



Clinical Multidisciplinary Hematology & Oncology: The 19th Annual Review – 2025

March 12-15, 2025
Scottsdale, Ariz., and Livestream

This course offers a comprehensive update on the diagnosis and management of hematology and oncology diseases. Presentations focus on new data and best practices for physicians and the healthcare team.

[Register Now](#)



Mayo Clinic Gastrointestinal Cancers 2025

April 4-5, 2025
Santa Barbara, Calif., and Livestream

Experts from Mayo Clinic and other international experts guide practicing physicians on integrating the best and most current evidence into their care for patients with the whole spectrum of gastrointestinal cancers.

[Register Now](#)



8th Annual Mayo Clinic Hematology/Oncology Case-Based Approaches to Patient Care for NPs, PAs, and Nurses 2025

April 10-12, 2025
Fernandina Beach, Fla., and Livestream

This course highlights the challenges of caring for patients with cancer. The needs of advanced practice providers and nurses are addressed in this symposium.

[Register Now](#)

Consults and Referrals

Phoenix/Scottsdale, Arizona
866-629-6362

Jacksonville, Florida
800-634-1417

Rochester, Minnesota
800-533-1564

[Online Referrals](#)

Resources

[Life-Changing Careers](#)

[Clinical Trials](#)

[Mayo Clinic School of Continuous Professional Development](#)



[Comments?](#)

We're interested in your feedback about this newsletter.

[Pass It On](#)

Invite a friend to subscribe.

[MayoClinic.org](#) | [Newsletter Archive](#) | [Contact](#) | [Medical Professionals](#)