

Cancer Physician Update

September 2024



READ Germline testing for hematologic malignancies using DNA extraction from hair follicles

Patient Care



Phase 3 study results in metastatic prostate cancer

Metastatic castration-resistant prostate cancer presents treatment challenges, including the side effects of chemotherapy. Mayo Clinic researchers find that lutetium-177 prolongs radiographic progression-free survival in patients yet to receive taxane chemotherapy.

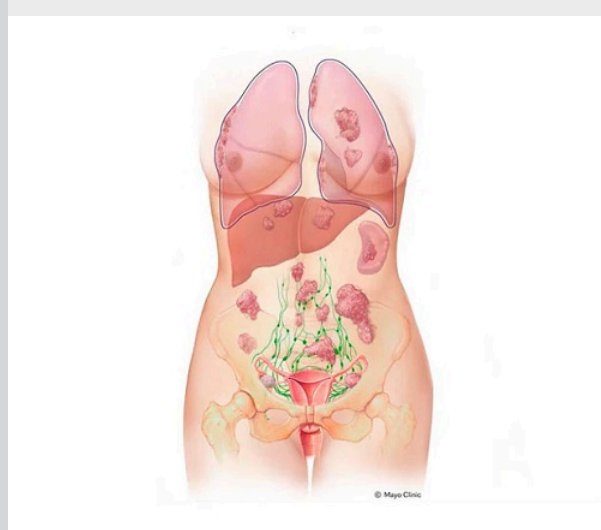
[Learn more](#)

[Refer a Patient](#)

[See more Cancer news](#)

[View Cancer specialty videos and Grand Rounds presentations](#)

Research



Mayo Clinic trial identifies operable high-grade serous ovarian cancer

A pilot study assessing CT plus molecular subtyping provided useful presurgical information for patients and surgeons, indicating which patients have a low likelihood of successful disease resection.

[Learn more](#)

[See all Cancer Clinical Trials at Mayo Clinic](#)

Education

Mayo Clinic School of Continuous Professional Development offers [live courses](#), [livestreaming courses](#), [online continuing medical education \(CME\) courses](#) and [podcasts](#) to meet your CME needs.

[See all Hematology and Oncology Continuing Medical Education courses](#)



Caring for the Cancer Patient 2024 Nov. 7-9, 2024 Scottsdale, Ariz., and Livestream

An engaging, multidisciplinary team explores how to address the myriad of questions many healthcare professionals face on how to best manage their patients' cancer side effects and survivorship.

[Register Now](#)

Consults and Referrals

Phoenix/Scottsdale, Arizona
866-629-6362

Jacksonville, Florida
800-634-1417

Rochester, Minnesota
800-533-1564

[Online Referrals](#)

Resources

[Life-Changing Careers](#)

[Clinical Trials](#)

[Mayo Clinic School of Continuous Professional Development](#)



[Comments?](#)

We're interested in your feedback about this newsletter.

[Pass It On](#)

Invite a friend to subscribe.